

# Modern Family Vs. Leave It To Beaver(1960's)

By Scott MacLeish  
and  
Mitchell Stearns

## Leave It To Beaver

Leave It To Beaver was a tv show that aired from 1957 till 1963. The first season was aired on CBS then the show moved to ABC. The producer was Harry Ackerman and the writers were Bob Mosher and Joe Connelly. This was a hit tv show at the time and it had 6 seasons.

# What was the show about?

The setting was in a middle class neighborhood. The show was seen through the eyes of a kid living in a middle class family. The boy's name is Theodore Cleaver but he better known as “Beaver.” Beaver was always getting himself into trouble and ridiculous situations. Someone who influenced him was Eddie Haskell who was a teenage boy who always did bad stuff but never got caught. At the end of the day it was always his parents or his brother getting him out of trouble. The show had lots of racism and sexism. But at that time it was ok to do that. The show also entertained by using a lot of things that were going on at the time like the Iron Curtain, Kennedy, the Space Race, black protests, and the start of the gay rights movement.

# Target audience

The target audience of the show was white middle class families. It appealed to them because the show was about a stereotypical middle class family and families could relate to the show. The mom was like a maid. The dad was a racist and was hard on people. The parents don't understand what's cool. The younger son was clumsy and lonely because his older brother was always out with his friends. But like a family they were always there for each other. Most people who would still watch it today, would be old men or history enthusiasts.

# Main Characters

Barbara Billingsley- June Cleaver- Mom



Jerry Mathers- Theodore Cleaver- Son  
“Beaver”



Hugh Beaumont- Ward Cleaver- Dad



Tony Dow- Wally Cleaver- Big Brother



Ken Osmond- Eddie Haskell- Sneaky teenager



***Tv Today***

# Modern Family

*Modern family* is a popular uprising show that was first aired september 23, 2009. *Modern Family* revolves around three middle class families living in the Los Angeles area who are interrelated through Jay Pritchett and his children. The producers; Jeffrey Morton- Chris Smirnoff- Elaine Ko- Sally Young- Becky Mann- Audra Sielaf. Today this show is greatly known and favored by many.



What is this show about?

This Show was based on a whole family tree who all share different ways of life. Every part of this particular family shares different morals and brings social acceptance to many uprising themes in the 20th and 21'st century.

# Targeted audience

The targeted audience for *Modern Family* is mainly any “Modern Family” living in America. This Show’s purpose was to reenact any themes or uprising movements going on in the 20th and 21’st century. Modern Family is an American Mockumentary/sitcom that sets general norms. The Progress for homosexuals and the movement for their social exception was greatly impacted by the gay couples presented in the show. The marriage between young and old is also presented in this show which brings acceptance to the all Americans. Other themes that were Portrayed were; Adoption, Alienation, and the use of technology in the changing society.

# Main characters

## Jay

Played by Ed O'Neill



## Gloria

Played by Sofia Vergara



## Claire

Played by Julie Bowen



## Phil

Played by Ty Burrell



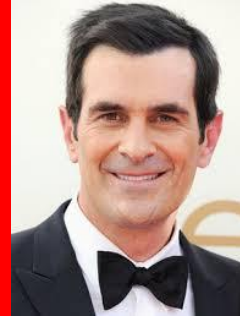
## Cameron

Played by Eric Stonestreet



## Mitchell

Played by Jesse Tyler Ferguson



## Haley

Played by Sarah Hyland



## Alex

Played by Ariel Winter



## Luke

Played by Nolan Gould



## Manny

Played by Rico Rodriguez



## Lily

Played by Aubrey Anderson-Emmons



# The Difference

Today we have so much technology and equality so everything in Leave It To Beaver would be considered insulting or politically incorrect. Modern Family portrays many recent society changes that the father in Leave It To Beaver would hate, like gay marriage and equality. Modern Family represents what the stereotypical middle class family looks like today. In Leave It To Beaver parents had to worry about there kids getting in trouble at school but in Modern Family parents worry about kids doing inappropriate stuff on electronics and the experiment of drugs. Modern Family is very different from Leave It To Beaver because everyone in the family is equal. The dad in Modern Family does not have power over the mom nor is he treated differently like in Leave it to Beaver. Both shows portray what is going on in each others time periods and represents current themes.

# Bibliography

<http://abc.go.com/shows/modern-family/cast>

<http://www.imdb.com/title/tt0050032/>

<http://www.mediapost.com/publications/article/207817/leave-it-to-beaver-and-the-joys-of-nostalgia.html>

<http://www.timelines.ws/20thcent/1957.HTML>

<http://www.shmoop.com/1960s/timeline.html>

[http://www.leaveittobeaver.org/thesis/thesis\\_intro.htm](http://www.leaveittobeaver.org/thesis/thesis_intro.htm)

<http://www.babble.com/home/june-cleaver-inspired-retro-aprons/>

<http://genius.com/Tech-n9ne-strange-music-box-lyrics#note-714662>

<http://www.freerepublic.com/focus/news/2930094/posts>

<http://www.ruthtenzerfeldman.com/biome-earth.html>

<http://genius.com/1701679>

<http://taddlr.com/celebrity/ed-oneill/>

<http://fotonin.com/1143209.html>

<http://thedailynewnation.com/news/66953/sofia-vergara-highest-paid-tv-actress.html>

[http://disney.wikia.com/wiki/Ty\\_Burrell](http://disney.wikia.com/wiki/Ty_Burrell)

<http://www.justjared.com/photo-gallery/2581753/jesse-tyler-ferguson-modern-family-emmys-best-comedy-01/>

<http://www.maguzz.com/eric-stonestreet.html>

<http://oliverwillis.com/2015/08/17/video-sarah-hyland-swears-at-teen-choice-awards/>

<http://www.popsugar.com/celebrity/photo-gallery/25190837/image/25190844/Nolan-Gould>

<http://www.businessinsider.com/why-ariel-winter-from-modern-family-got-breast-reduction-surgery-2015-8>

[http://modernfamily.wikia.com/wiki/Rico\\_Rodriguez\\_II](http://modernfamily.wikia.com/wiki/Rico_Rodriguez_II)

[http://www.snipview.com/q/Aubrey\\_Anderson-Emmons](http://www.snipview.com/q/Aubrey_Anderson-Emmons)